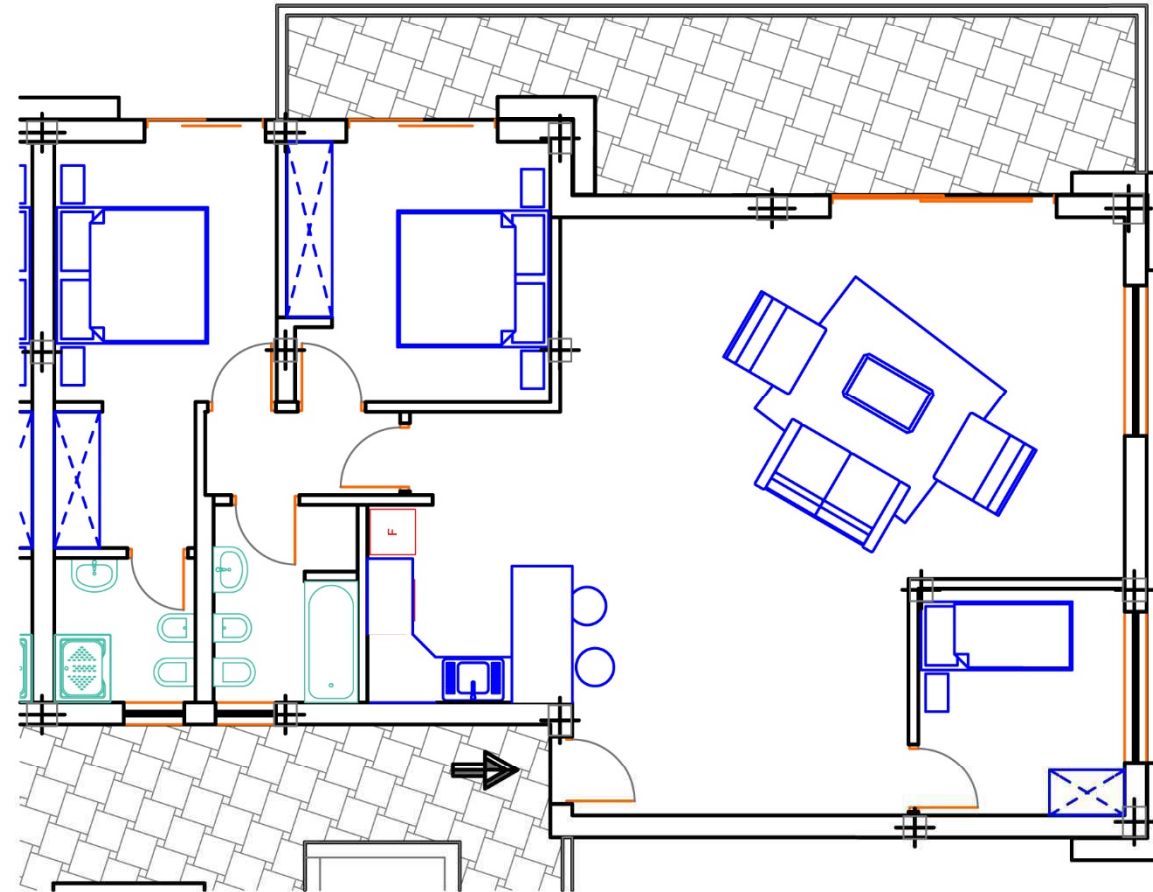
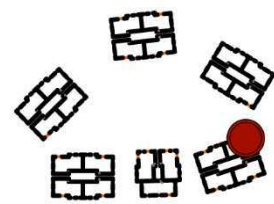


APPARTAMENTO	POSIZIONE	LATO	SUPERFICIE MQ	GIARDINO TERRAZZA MQ	SOLARIUM MQ	N.STANZE	N.BAGNI	PREZZO
J303	PIANO TERRA	PISCINA	120	163		3	2	€ 225.000,00



sup. bruta: 118,7 m²
sup. terrazza: 25,09 m²



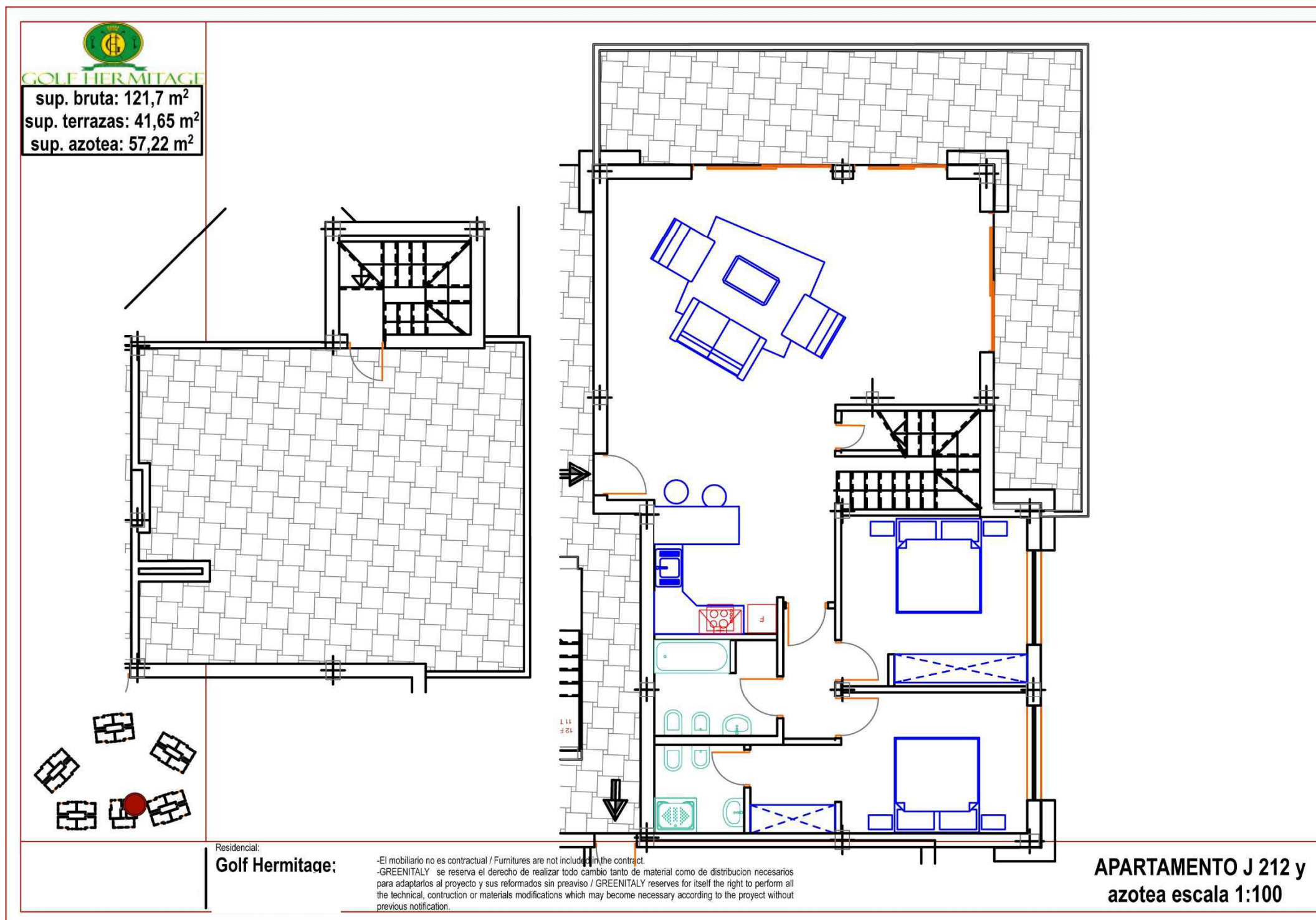
Residencial:

Golf Hermitage:

-El mobiliario no es contractual / Furnitures are not included in the contract.
-GREENITALY se reserva el derecho de realizar todo cambio tanto de material como de distribución necesarios para adaptarlos al proyecto y sus reformados sin preaviso / GREENITALY reserves for itself the right to perform all the technical, construction or materials modifications which may become necessary according to the project without previous notification.

APARTAMENTO J 313
escala 1:100

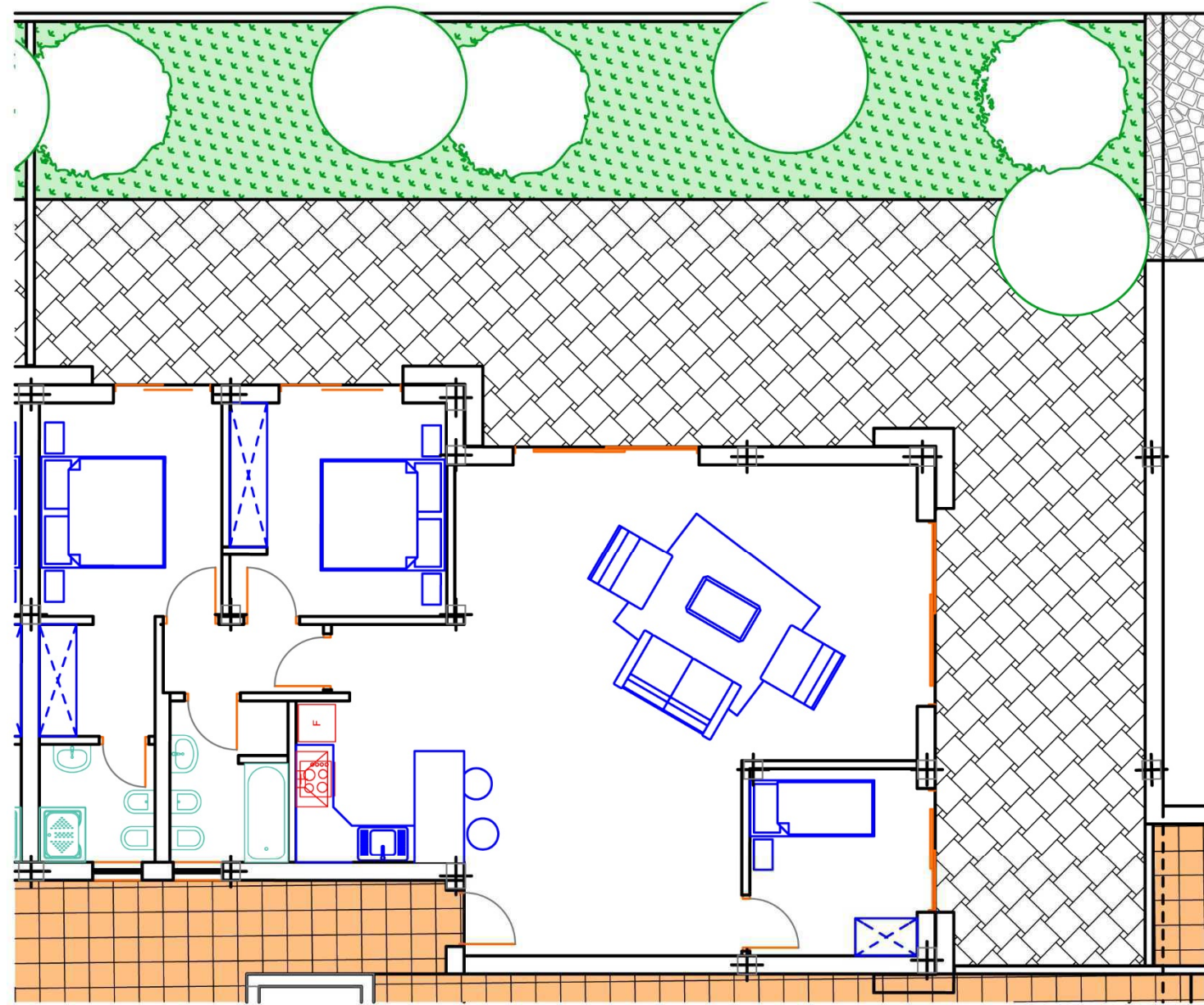
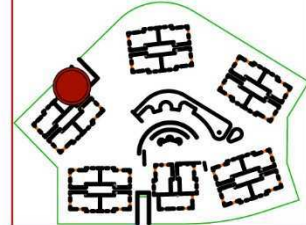
APPARTAMENTO	POSIZIONE	LATO	SUPERFICIE MQ	GIARDINO TERRAZZA MQ	SOLARIUM MQ	N.STANZE	N.BAGNI	PREZZO
J313	PRIMO PIANO	PISCINA	120	28		3	2	€ 260.000,00



APPARTAMENTO	POSIZIONE	LATO	SUPERFICIE MQ	GIARDINO TERRAZZA MQ	SOLARIUM MQ	N.STANZE	N.BAGNI	PREZZO
J212	ATTICO	PISCINA	120	45	59	2	2	€ 302.000,00



sup. bruta: 118,7 m²
sup. jardin: 145,05 m²



En construcción / under construction

Residencial:
Golf Hermitage:
San Miguel de Abona, Tenerife

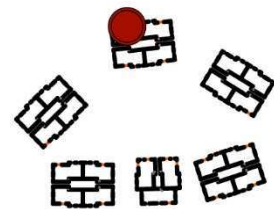
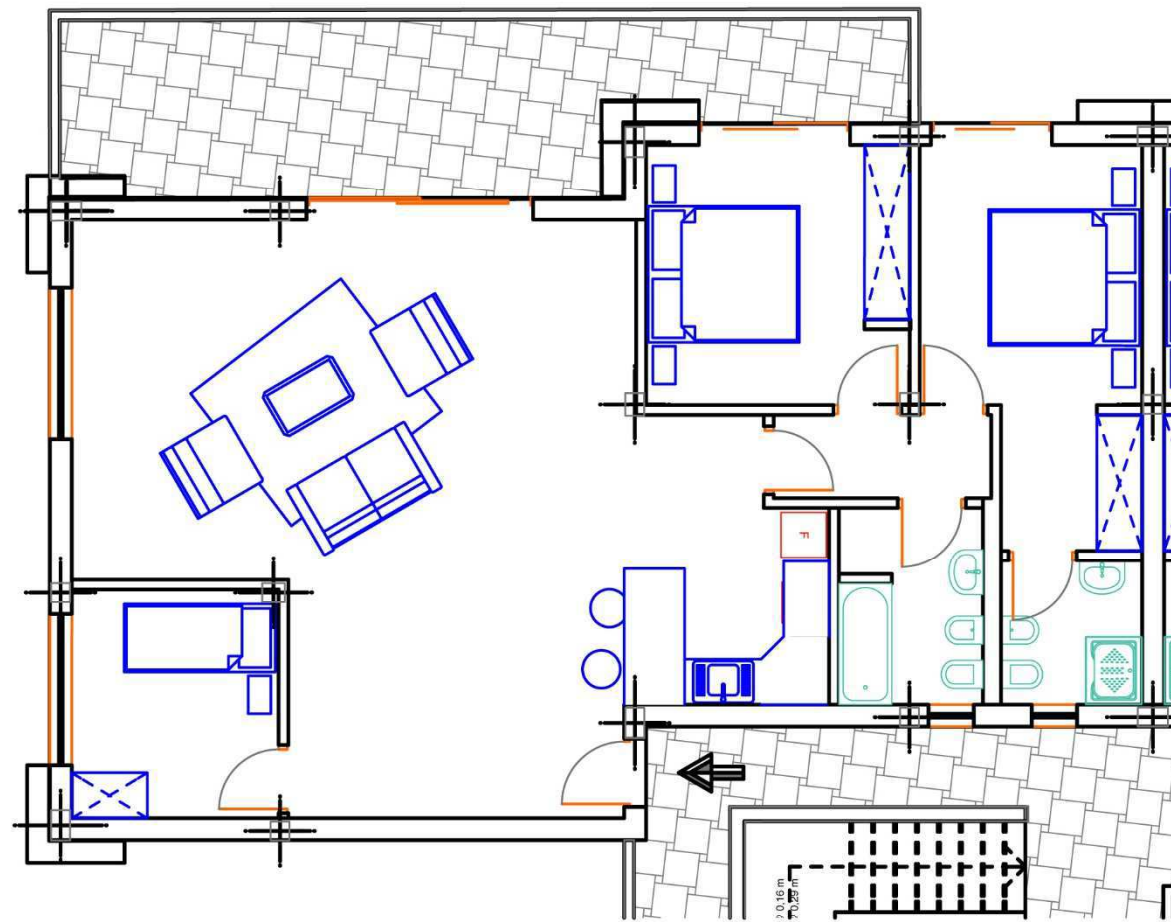
-El mobiliario no es contractual / Furnitures are not included in the contract.
-GREENITALY se reserva el derecho de realizar todo cambio tanto de material como de distribución necesarios para adaptarlos al proyecto y sus reformados sin preaviso / GREENITALY reserves for itself the right to perform all the technical, contruction or materials modifications which may become necessary according to the proyect without previous notification.

APARTAMENTO J403
escala 1:100

APPARTAMENTO	POSIZIONE	LATO	SUPERFICIE MQ	GIARDINO TERRAZZA MQ	SOLARIUM MQ	N.STANZE	N.BAGNI	PREZZO
J403	PIANO TERRA	TEIDE	120	145		3	2	€ 270.000,00



sup. bruta: 118,7 m²
sup. terrazza: 25,09 m²




En construcción / under construction

Residencial:
Golf Hermitage;
San Miguel de Abona, Tenerife

-El mobiliario no es contractual / Furnitures are not included in the contract.
-GREENITALY se reserva el derecho de realizar todo cambio tanto de material como de distribución necesarios para adaptarlos al proyecto y sus reformados sin preaviso / GREENITALY reserves for itself the right to perform all the technical, construction or materials modifications which may become necessary according to the project without previous notification.

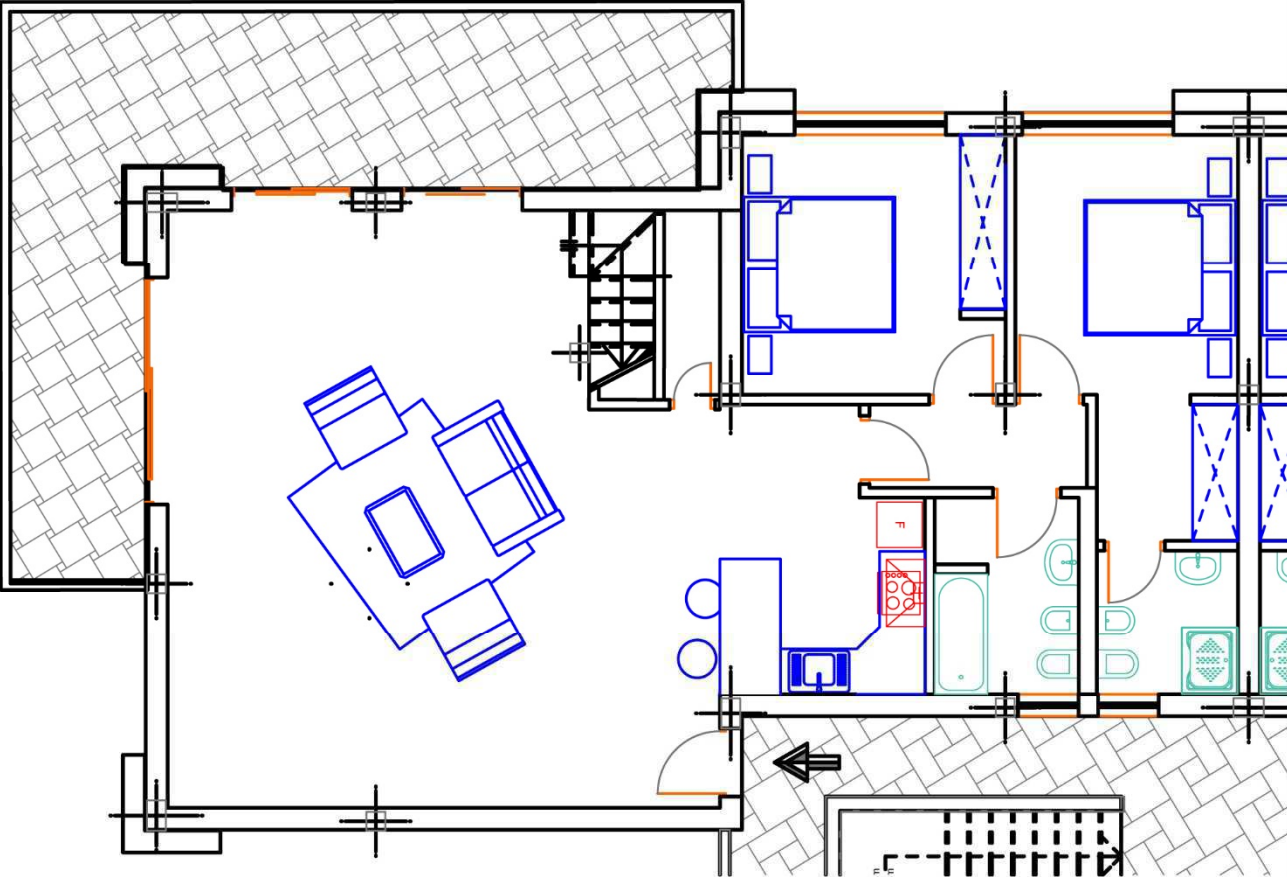
APARTAMENTO J 514
escala 1:100

APPARTAMENTO	POSIZIONE	LATO	SUPERFICIE MQ	GIARDINO TERRAZZA MQ	SOLARIUM MQ	N.STANZE	N.BAGNI	PREZZO
J514	PRIMO PIANO	TEIDE	120	28		3	2	€ 275.000,00



GOLF HERMITAGE

sup. bruta: 124,23 m²
sup. terrazza: 34,60 m²
sup. azotea: 49,70 m²



En construcción / under construction

**APARTAMENTO J 624 y
Azotea escala 1:100**

Residencial:

Golf Hermitage:

-El mobiliario no es contractual / Furnitures are not included in the contract.
-REENITALY se reserva el derecho de realizar todo cambio tanto de material como de distribución necesarios para adaptarlos al proyecto y sus reformados sin preaviso / GREENITALY reserves for itself the right to perform all the technical, contruction or materials modifications which may become necessary according to the proyect without previous notification.

APPARTAMENTO	POSIZIONE	LATO	SUPERFICIE MQ	GIARDINO TERRAZZA MQ	SOLARIUM MQ	N.STANZE	N.BAGNI	PREZZO
J624	ATTICO	TEIDE	120	36	56	2	2	€ 355.000,00